



**Transpo Industries, Inc.** manufactures a variety of innovative products and materials designed for improving rail and road safety. The company's reputation as an expert in rehabilitation, preservation and safety has made Transpo a leading supplier since 1968.



[WWW.TRANSPO.COM](http://WWW.TRANSPO.COM)

# Dynamic Envelope Marking Color-Safe®

## Durable and High Definition Color

Color-Safe® used for demarcation of the dynamic envelope provides a highly visible and durable marking at highway rail grade crossings.

Color-Safe® is a Methyl Methacrylate (MMA) based product and is the only UV stable material used for color pavement marking. Supplied aggregates are used to create appropriate skid resistance for the vehicular traffic and specification requirements.

Easily applied by hand with squeegees and rollers or with automatic spray equipment, Color-Safe® cures rapidly without requiring external heat sources.

Color-Safe® is capable of full cure in a wide range of temperatures allowing for a longer marking season.

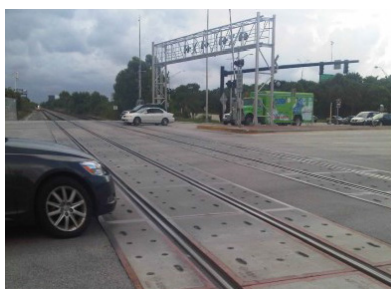
“Study results provide initial evidence that dynamic pavement markings with signage can produce an increase in safe stopping behaviors”  
-Federal Railroad Administration

PHYSICAL PROPERTIES*		
Properties	Unit of Measure	Test
<b>Neat Resin</b>		
Tensile Strength	> 800 psi	ASTM D638 Type I
Elongation	> 30%	ASTM D638 Type I
Pot Life @72°F (22°C)	15 Min	AASHTO T237
Solids Content	100%	ASTM D1644
<b>Aggregate</b>		
Hardness	≥ 7.0	Mohs Scale

\*To be used as general guidelines only

After installation of Dynamic Envelope Marking:

- There was a 39% reduction of motorists stopping on the tracks over the same time frame.
- Descending violations were reduced by over 50%.



**SAFER TRANSPORTATION THROUGH INNOVATION**

# Color-Safe®

## DYNAMIC ENVELOPE MARKING

### Features and Advantages

- Excellent Color Retention and Durability
- High Visibility Color Increases Motorist Awareness
- Available in a Variety of Colors and Aggregate Sizes
- Easy Application
- Fast Cure Time (30 min at 70° F)
- Wide Application Temperature Range (40°-100° F)
- Low Life Cycle Cost
- Ability to Adhere to Both Concrete and Asphalt Surfaces

### Application Process

**Prepare Surface:** Surfaces receiving Color-Safe® must be thoroughly cleaned and free of all dirt. Contaminates that might interfere with the proper adhesion of the material must be removed by sandblasting or shotblasting.

**Mix:** Color-Safe® is made up of three components (resin, hardener and aggregate) that must be mixed thoroughly for uniform curing and performance.

**Apply:** Color-Safe® is applied by either the mixed resin and aggregate method or the spray/broadcast aggregate method.

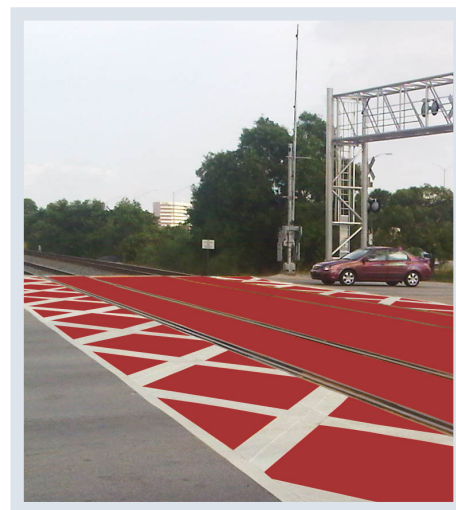
Refer to the technical data sheet for application details.

**No special equipment is required for installation.**

### Other Applications

Transpo's Color-Safe® can be used as an anti-skid surface and/or for demarcation.

- Bike Lanes and Bike Boxes
- Pedestrian Refuge and Plaza
- Toll Lanes
- Bus Lanes
- Airfields
- Crosswalks
- Roundabouts
- High Friction Surface Treatments



Color-Safe® enhances your safety program with high visibility color at Rail Grade Crossings



\*Check with manufacturer for most recent Technical Data Sheet before using to specify.

## Need More Information?

[WWW.TRANSPO.COM/DYNAMIC-ENVELOPE](http://WWW.TRANSPO.COM/DYNAMIC-ENVELOPE)

Contact the materials experts at Transpo to find out more about the various products we offer. If you need advice on how to install the product, the professionals at Transpo will guide you through the process. Project specific questions? We can assist you in creating a cost-effective, tailored solution for your project.

**Transpo Industries, Inc.**  
20 Jones Street  
New Rochelle, NY 10801

914.636.1000  
800.321.7870  
914.636.1282  
info@transpo.com

Phone  
Toll Free  
Fax



Manufactured and Distributed By:  
**CASTEK™**  
A TRANSPO INDUSTRIES COMPANY INC.