

Saving Lives...



Break-Safe[®]
Breakaway Sign Support System

Breakaway Systems for:



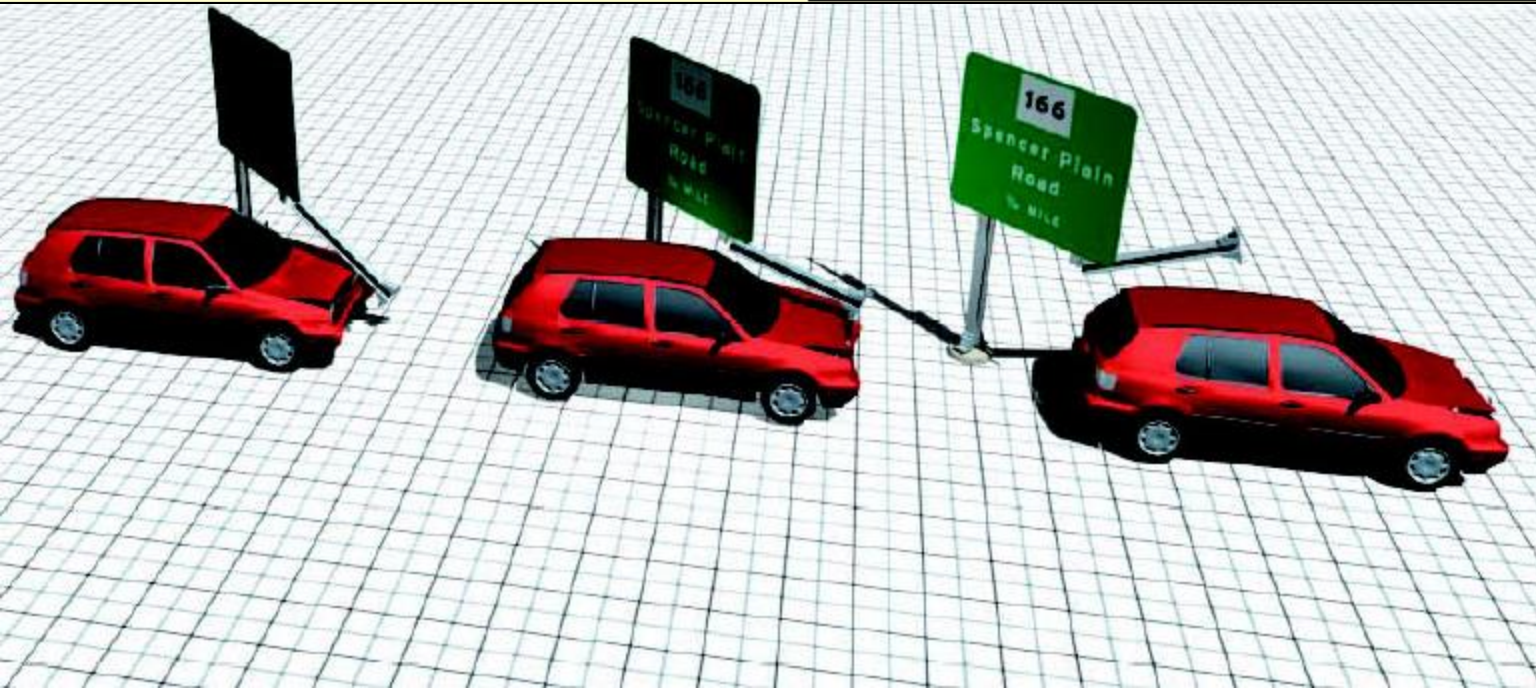
- Ground-Mounted Signs Located within Roadside Clear Zones
- Locations Vulnerable to Vehicular Impacts
- Single Post Signs
- Multiple Post Signs
- Use all over U.S.A.

Range of Post Sizes



- National Signing Standards Specify Increased Sizes for Visibility & Wind Loads
- These Changes Create an Increase in Structural Demands on Sign Supports
- Break-Safe Provides High Structural Load-Carrying Capacity
- Supports Wide range of Post Sizes, up to and Including the Largest Permitted by AASHTO
- Flexibility Allows for many Choices when Selecting Post Types and Sizes

Omni-Directional



- The angle of an errant vehicle leaving a highway impacting a roadside structure is impossible to predict. Most breakaway support systems are one directional in their design and crash performance.

Features/Advantages








- Couplings Break with Consistent, Predictable Behavior Regardless of the Angle of Impact
- This Unique Capability exceeds FHWA and AASHTO Requirements for Impact Performance
- All Models are FHWA-Approved for use on the National Highway System
- Quick & Clean Breakaways Save Lives While Reducing Property Damage



Breakaway Supports

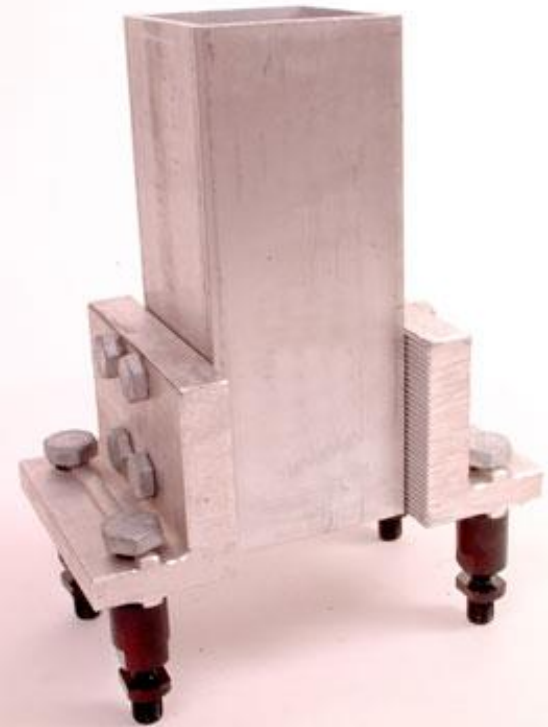
Model Selection:

Break-Safe Model A Series:

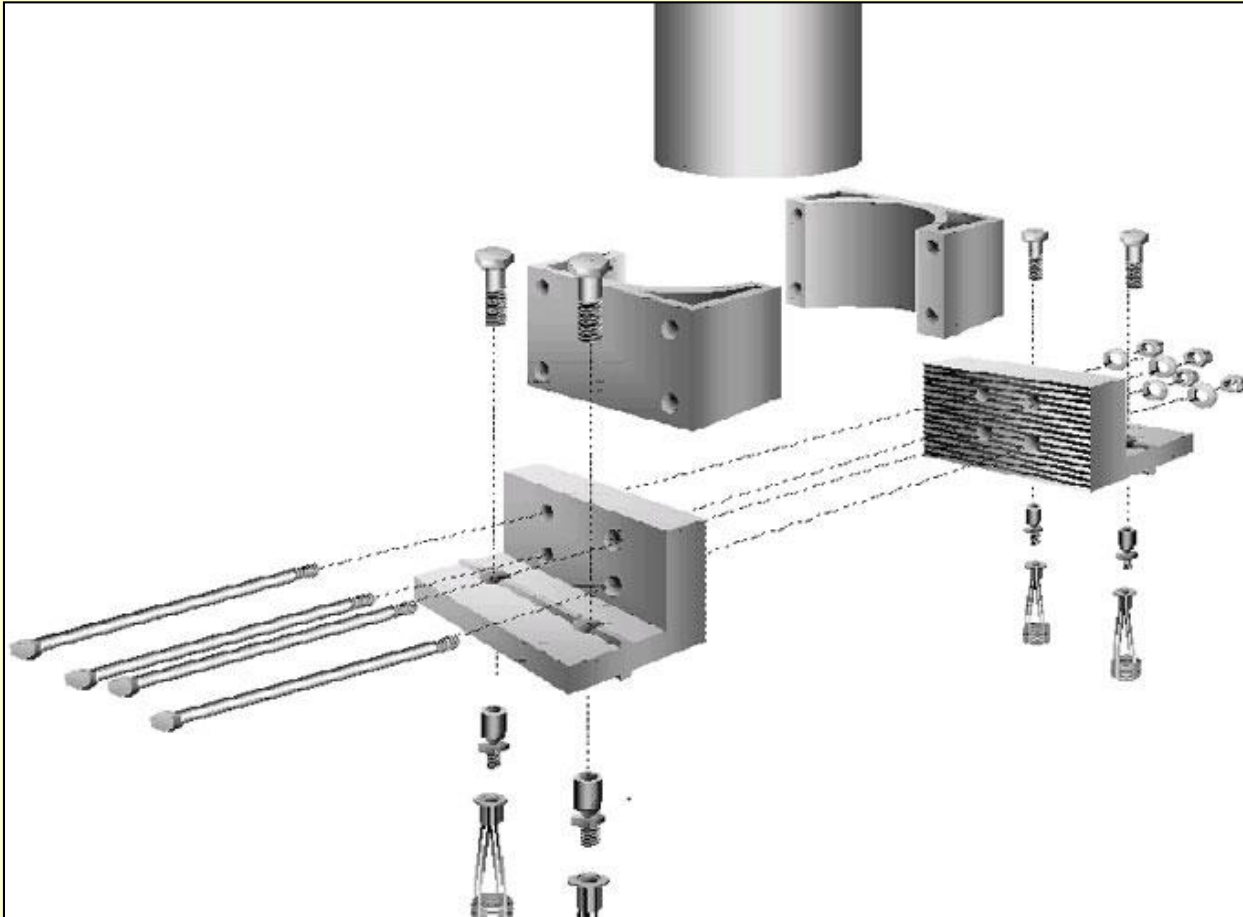
Break-Safe Model		Post Type and Size
AI4		4", 5" Standard I-Beams
AI6		W6x9 Wide Flange
AP		3", 3.5", 4", 4.5" O.D. Round Pipes
AS		2.5", 3", 4", 5" Square Tubes
AU		4, 6, 8 lb Back-to-Back U-Channels

Break-Safe Model B Series:

Break-Safe Model		Post Type and Size
B525		6", 8" Wide Flange
B650		10"-21" Wide Flange 6", 7", 8" Square Tubes



Type A: Small Posts



- Round Pipe
(3", 3.5", 4", 4.5")
Steel or Aluminum
- Wide Flange (6x9w)
Steel I-Beam
- Standard "S" Shape
Steel Beam
- Square Tube (2.5", 3",
3.5", 4") Steel or
Aluminum

Type B: Large Posts



- Wide Flange Steel Beam, 6" and 8"
- Wide Flange Steel Beam, 10" to 21"
- Square Tubes, 5", 6", 7" and 8"

Easy Installation



- No Special Tools or Equipment Required
- Components Secured using American Institute of Steel Construction (AISC) turning-of-nut tightening
- Eliminates Torque Requirement Typical of Slip-Base Systems

Pendulum Test



- Transpo Breakaways are Designed to Perform Equally, Regardless of the Angle of Impact
- Precisely Machined Couplings Cause System to Fracture Safely at Relatively Low Force and Energy Levels
- This Exceeds the AASHTO Requirements for Impact Velocity Change